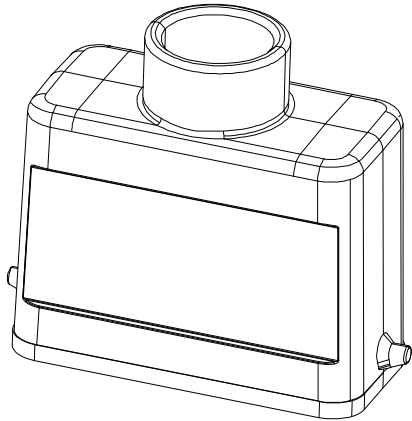


序号	型号 (Type)	料号 (PART NO)	螺纹规格 Thread size
1	H10A-TE-2B-M20	19200101440	M20
2	H10A-TE-2B-PG13.5	09200101440	PG13.5

- 技术参数:
- 材料: 压铸铝
  - 表面处理: 粉末喷涂
  - 颜色: Grey (灰色)
  - 温度范围: -40℃ - +125℃
  - 防护等级: IP65 (联锁状态, IEC 60529)
  - 出线方向: 顶出线
  - 出线孔数: 1
  - 螺纹规格: M/PG
  - 密封元件: NBR

- Technical specification:
- Material: Aluminium die-cast
  - Surface: powder-coated
  - Colour: (grey)
  - Temperature range: -40℃ - +125℃
  - Degree of Protection: IP65 (acc.to IEC 60529 for coupled connector)
  - Cable entry: top entry
  - No. of cable entries: 1
  - Thread size: M/PG
  - Hoods/Housings sealing: NBR



浙江昊科电气有限公司 ZHEJIANG HAOKE ELECTRICAL CO.,LTD		图号 Drawing No:		/			
产品代号 Part Code: H10A-TE-2B-M/PG		产品料号 PART NO:		/			
Date:	2018.08.16	Scale	REV	Weight	Qty	Drawn:	SHEET
	All Dimensions in mm Original Size DIN A 4	1:1.5	HK-1	/	/	Tang	1/1