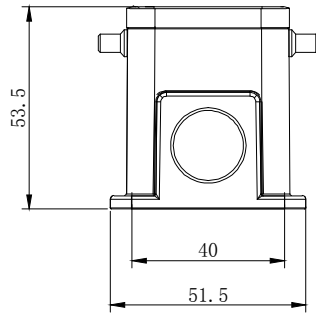
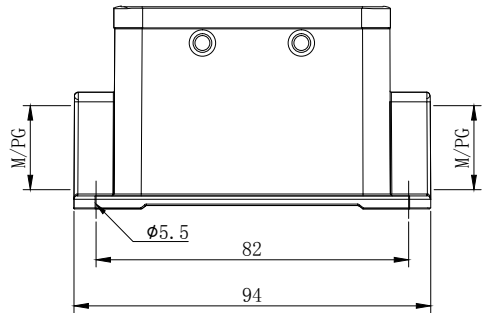
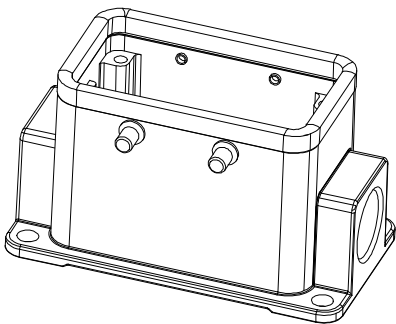


序号	型号 (Type)	料号 (PART NO)	螺纹规格 Thread size
1	H10B-SF-4B-2M20	19300101165	M20
2	H10B-SF-4B-2M25	19300101166	M25
3	H10B-SF-4B-2PG16	09300101161	PG16



- 技术参数:
- 材料: 压铸铝
 - 表面处理: 粉末喷涂
 - 颜色: Grey (灰色)
 - 温度范围: -40°C - +125°C
 - 防护等级: IP65 (联锁状态, IEC 60529)
 - 出线方向: 侧出线
 - 出线孔数: 2
 - 螺纹规格: M/PG
 - 密封元件: NBR

- Technical specification:
- Material: Aluminium die-cast
 - Surface: powder-coated
 - Colour: (grey)
 - Temperature range: -40°C - +125°C
 - Degree of Protection: IP65 (acc.to IEC 60529 for coupled connector)
 - Cable entry: side entry
 - No. of cable entries: 2
 - Thread size: M/PG
 - Hoods/Housings sealing: NBR



浙江昊科电气有限公司 ZHEJIANG HAOKE ELECTRICAL CO.,LTD		图号 Drawing No:		/				
产品代号 Part Code: H10B-SF-4B-2M/2PG		产品料号 PART NO:		/				
Date:	2018.09.16	Scale	REV	Weight	Qty	Drawn:	SHEET	
	All Dimensions in mm Original Size DIN A 4	1:2	HK-1	/	/	Tang	1/1	