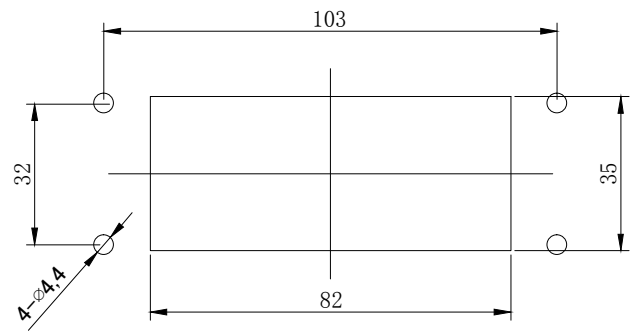
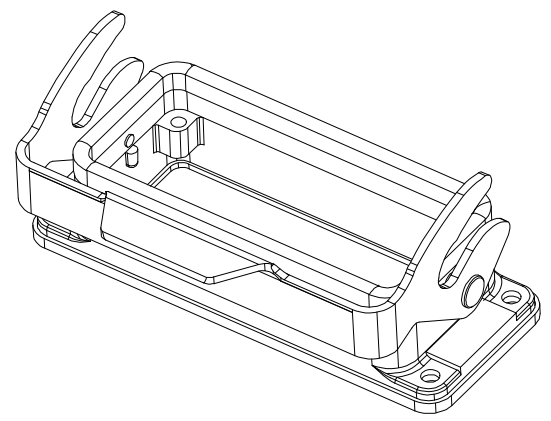
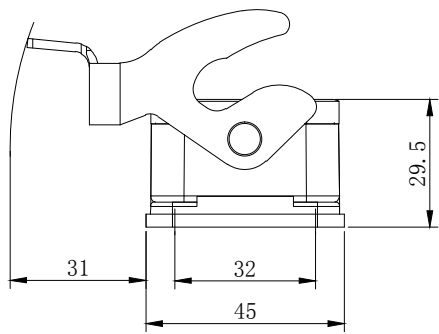
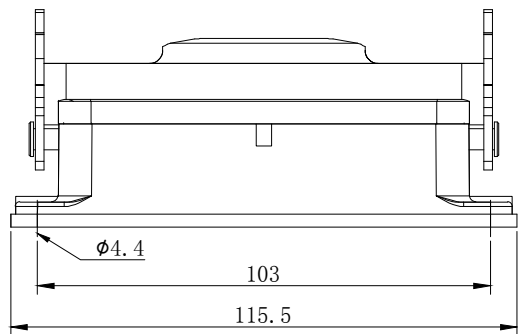


8 7 6 5 4 3 2 1

H  
G  
F  
E  
D  
C  
B  
A

H  
G  
F  
E  
D  
C  
B  
A



面板开孔图  
Panel cut out

- 技术参数:
- 材料: 压铸铝
  - 表面处理: 粉末喷涂
  - 颜色: Grey (灰色)
  - 温度范围:  $-40^{\circ}\text{C} - +125^{\circ}\text{C}$
  - 防护等级: IP65 (联锁状态, IEC 60529)
  - 联锁元件:
    - 锁扣方式: 单扣
    - 材料: 金属 (铁) 镀锌
  - 出线方向: 底部出线
  - 密封元件: NBR
- Technical specification:
- Material: Aluminium die-cast
  - Surface: powder-coated
  - Colour: (grey)
  - Temperature range:  $-40^{\circ}\text{C} - +125^{\circ}\text{C}$
  - Degree of Protection: IP65 (acc.to IEC 60529 for coupled connector)
  - Locking element:
    - locking type: single locking latch
    - material: metal galvanized/nickel plating
  - Cable entry: bottom entry
  - Hoods/Housings sealing: NBR

浙江昊科电气有限公司 ZHEJIANG HAOKE ELECTRICAL CO.,LTD		图号 Drawing No:		/			
产品代号 Part Code: H16B-BK-1L		产品料号 PART NO: 09300160307					
Date:	2018.08.23	Scale	REV	Weight	Qty	Drawn:	SHEET
	All Dimensions in mm Original Size DIN A 4	1:1.5	HK-1	/	/	Tang	1/1

8 7 6 5 4 3 2 1