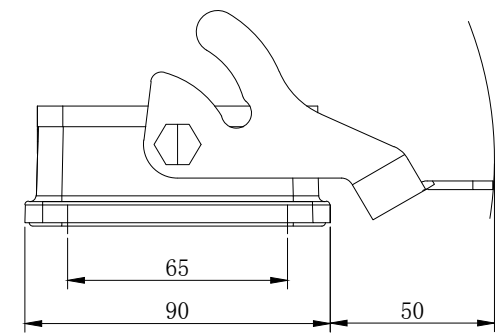
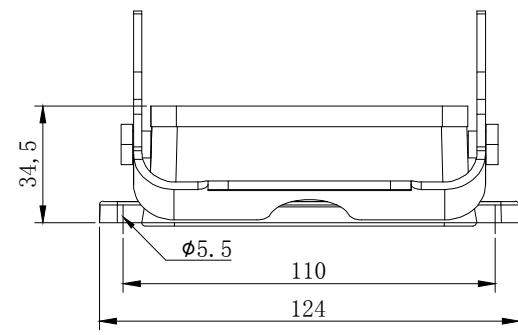


8 7 6 5 4 3 2 1

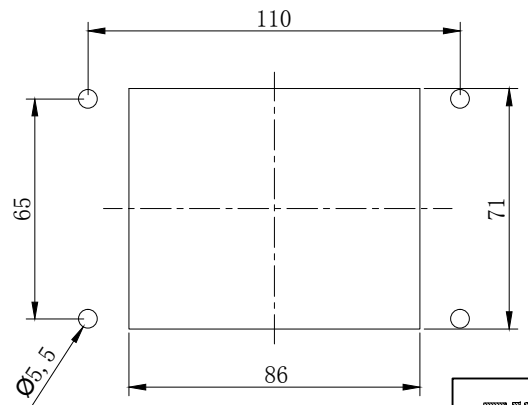
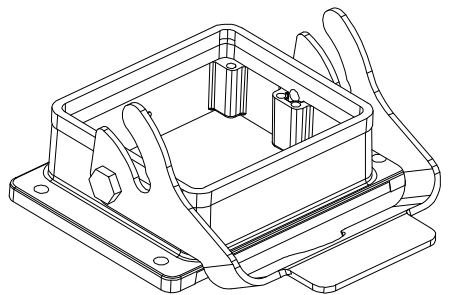
H
G
F
E
D
C
B
A

H
G
F
E
D
C
B
A



- 技术参数:
- 材料: 压铸铝
 - 表面处理: 粉末喷涂
 - 颜色: Grey (灰色)
 - 温度范围: -40℃ - +125℃
 - 防护等级: IP65 (联锁状态, IEC 60529)
 - 联锁元件:
 - 锁扣方式: 单扣
 - 材料: 金属(铁)镀锌
 - 出线方向: 底部出线
 - 密封元件: NBR

- Technical specification:
- Material: Aluminium die-cast
 - Surface: powder-coated
 - Colour: (grey)
 - Temperature range:
 - 40℃ - +125℃
 - Degree of Protection: IP65 (acc.to IEC 60529 for coupled connector)
 - Locking element:
 - locking type: single locking latch
 - material: metal galvanized/nickel plating
 - Cable entry: bottom entry
 - Hoods/Housings sealing: NBR



面板开孔图
Panel cut out

浙江昊科电气有限公司 ZHEJIANG HAOKE ELECTRICAL CO.,LTD		图号 Drawing No:		/			
产品代号 Part Code: H32B-BK-1L		产品料号 PART NO: 09300320307					
Date:	2019.02.10	Scale	REV	Weight	Qty	Drawn:	SHEET
	All Dimensions in mm Original Size DIN A 4	1:2	HK-1	/	/	Tang	1/1

8 7 6 5 4 3 2 1