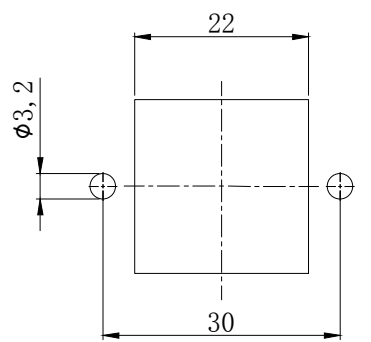


- 技术参数:
- 材料: 压铸锌
  - 盖子材料: 压铸锌
  - 表面处理: 粉末喷涂
  - 颜色: Grey (灰色)
  - 温度范围:  $-40^{\circ}\text{C} - +125^{\circ}\text{C}$
  - 防护等级: IP65 (联锁状态, IEC 60529)
  - 联锁元件:
    - 锁扣方式: 单扣
    - 材料: 不锈钢
  - 出线方向: 底部出线
  - 密封元件: NBR

- Technical specification:
- Material: zinc die-cast
  - Material, cover: zinc die-cast
  - Surface: powder-coated
  - Colour: (grey)
  - Temperature range:
    - $-40^{\circ}\text{C} - +125^{\circ}\text{C}$
  - Degree of Protection: IP65  
(acc.to IEC 60529 for coupled connector)
  - Locking element:
    - locking type: single locking latch
    - material: stainless steel
  - Cable entry: bottom entry
  - Hoods/Housings sealing: NBR



面板开孔图  
panel cut out

浙江昊科电气有限公司 ZHEJIANG HAOKE ELECTRICAL CO., LTD		图号 Drawing No:		/			
产品代号 Part Code: H3A-BK-1L-MCV/F		产品料号 PART NO: 09200030306					
Date:	2018.08.10	Scale	REV	Weight	Qty	Drawn:	SHEET
	All Dimensions in mm Original Size DIN A 4	1:1	HK-1	/	/	Tang	1/1